

**Facades available:**

Callington, Harrogate, Kent	
Lancaster, Sheffield, Swansea	
Wiltshire, Eastwood	
<b>Overall home width</b>	<b>11.15m</b>
<b>Overall home length</b>	<b>20.51m</b>

Residence	144.1m <sup>2</sup>	15.5sq
Garage	36.3m <sup>2</sup>	3.9sq
Porch	4.6m <sup>2</sup>	0.5sq
Alfresco	9.7m <sup>2</sup>	1.0sq
<b>Total</b>	<b>194.7m<sup>2</sup></b>	<b>21.0sq</b>

Listed details based on Sheffield facade floorplan (illustrated)

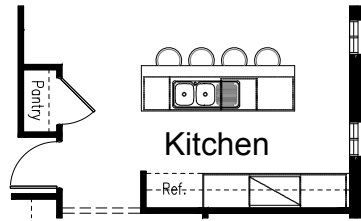
**FLOORPLAN OPTIONS**

We personalise our floorplans. Talk to us about our huge range of ready-to-go design options or simply visit [www.burbank.com.au/south-australia](http://www.burbank.com.au/south-australia) for more details.

**OPTION K1**

Provide Kitchen upgrade option which includes 1100mm(w) stud and plaster Pantry cabinet with 820mm hinged door adjacent to Bed 1 in lieu of 600mm laminate Pantry.

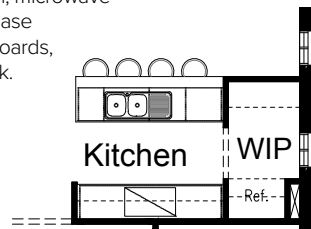
Kitchen includes 900mm retractable rangehood within cabinet, 900mm cooktop, 900mm under bench oven, 450mm drawer unit, dishwasher provision, microwave provision with pot drawer, 1No. 900mm base cupboard, 2No. 800mm base cupboards, 2No. 800mm overhead cupboards, additional bench top and tiled splash back.



**OPTION K2**

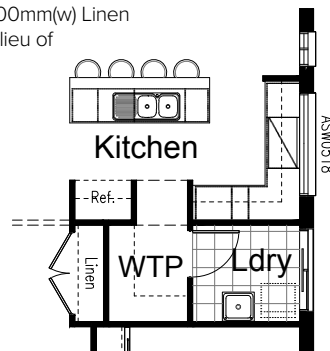
Provide Kitchen upgrade option which includes Galley-style kitchen bench tops, relocated Ref space and Walk-in Pantry.

Kitchen includes 900mm retractable rangehood within cabinet, 900mm cooktop, 900mm under bench oven, 450mm drawer unit, dishwasher provision, microwave provision with pot drawer, 3No. 800mm base cupboards, 2No. 800mm overhead cupboards, additional bench top and tiled splash back.



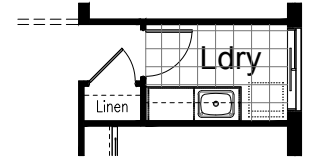
**OPTION K3**

Provide Kitchen upgrade option which includes L-shaped kitchen bench tops, relocated Ref space, Walk-through Pantry with direct access to Laundry. Kitchen includes 900mm retractable rangehood within cabinet, 900mm cooktop, 900mm under bench oven, 450mm drawer unit, dishwasher provision, microwave provision with pot drawer, 1No. 900mm base cupboard, 1No. 900mm corner base cupboard, 1No. 600mm base cupboard, 1No. 400mm base cupboard, 1No. 300mm base cupboard, 3No. 600mm overhead cupboards, 1No. 600mm corner overhead cupboard, 1No. 300mm overhead cupboard, additional bench top and tiled splash back. Option includes 1No. additional AFW0518 fixed window and 1700mm(w) Linen closet with 2No. 720mm hinged doors in lieu of standard.



**OPTION LD1**

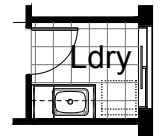
Provide Laundry upgrade including laminate base cupboards and stainless steel inset trough including 2No. 800mm base cupboards, 2No. 800mm overhead cupboards. additional bench top and tiled splashback to suit.



**OPTION LD2**

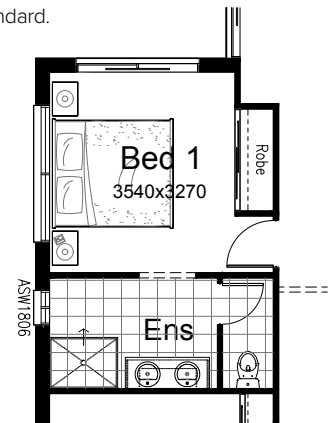
Provide Laundry upgrade including laminate base cupboards and stainless steel inset trough including 1No. 700mm base cupboards, 1No. 350mm base cupboard, 1No. 700mm overhead cupboards, 1No. 350mm overhead cupboard. additional bench top and tiled splashback to suit.

Note: option only available in conjunction with option K3



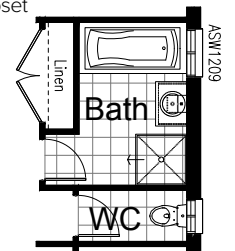
**OPTION ENS1**

Provide Ensuite upgrade which removes Walk-in Robe and provides built-in Robe with sliding doors. Ensuite includes enclosed WC with 720mm hinged door, 1482mm vanity with double basins and 1200x900mm tiled shower base. Option also includes ASW1806 sliding window in lieu of standard.



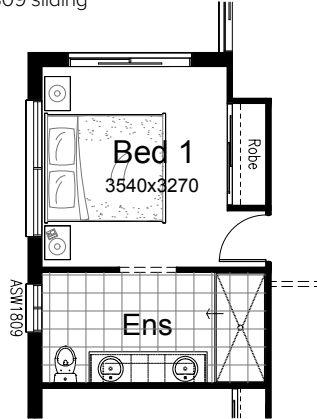
**OPTION IP1**

Provide floor plan option which removes separate Vestibule and changes 982mm vanity to 782mm vanity located within Bathroom with ASW1209 sliding window in lieu of standard. Layout of WC is rearranged and additional 1880mm(w) Linen closet with 2No. 820mm hinged doors is provided.



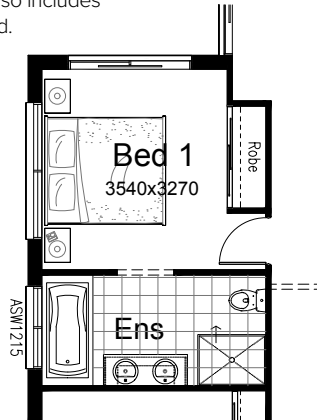
**OPTION ENS2**

Provide Ensuite upgrade which removes Walk-in Robe and provides built-in Robe with sliding doors. Ensuite includes relocated WC, 2082mm vanity with double basins and 1950x900mm wall-to-wall tiled shower base. Option also includes ASW1809 sliding window in lieu of standard.



**OPTION ENS3**

Provide Ensuite upgrade which removes Walk-in Robe and provides built-in Robe with sliding doors. Ensuite includes relocated WC, 1482mm vanity with double basins and 1200x900mm tiled shower base and 1675mm bath with tiled hob. Option also includes ASW1218 sliding window in lieu of standard.



**OPTION IP2**

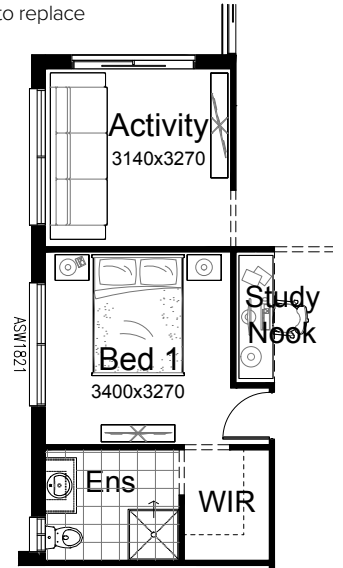
Provide floor plan option which provides Activity in lieu of Bed 4. Option removes 820mm hinged door and built-in Robe with sliding doors and provides opening with bulkhead.

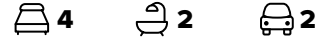


**OPTION IP3**

Provide floor plan option which provides Activity in lieu of Bed 4 and swaps location of Bed 1, Ensuite and Walk-in Robe. Option removes 820mm hinged door and built-in Robe with sliding doors and provides opening with bulkhead and provides ASW2021 sliding window to Bed 1 in lieu of standard. Study Nook to Passage also created with Nib wall and bulkhead over.

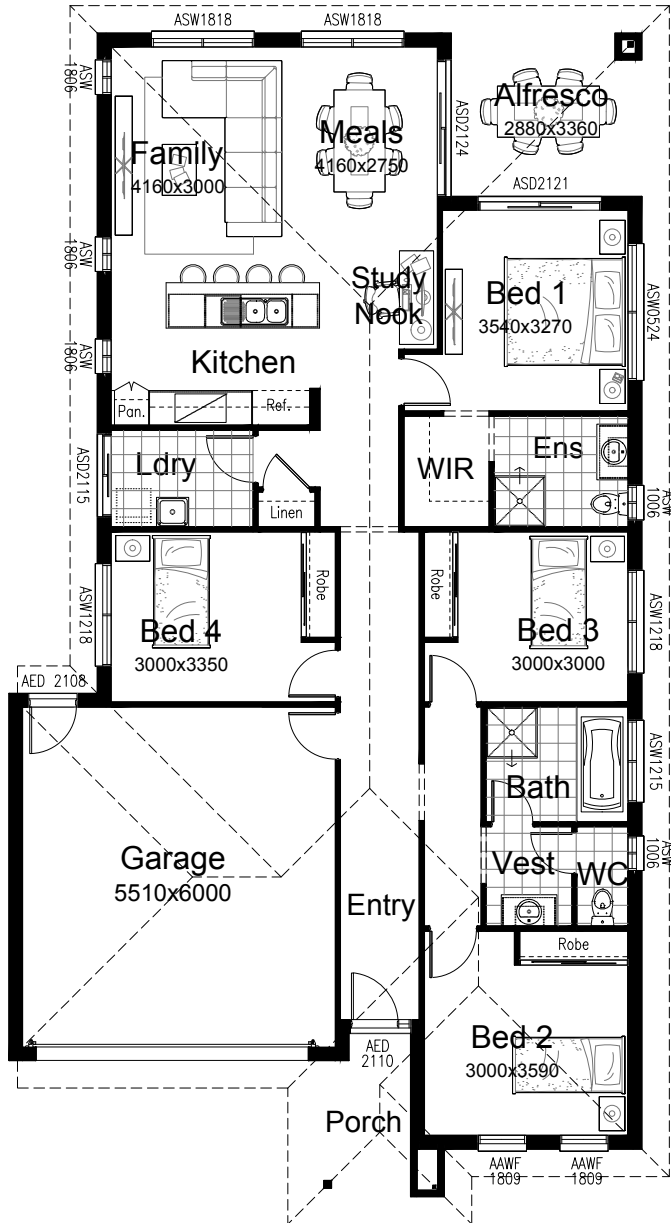
Note: available in conjunction with options ENS1, ENS2 and ENS3 with built-in Robe to replace Study Nook.





**OPTION IP4**

Provide floor plan option which mirrors the rear of the home.



\*Copyright conditions. All photos and illustrations are representative only. Floor plans and specifications may be varied by Burbank without notice, the dimensions are diagrammatic only and a Building Contract with final drawings will display correct dimensions and detail. All designs are the property of Burbank and must not be used, reproduced, copied or varied, wholly or in part without written permission from an authorised Burbank representative. Copyright Burbank Australia (SA) Pty Ltd. ABN 96 165 533 406. BLD 266709.